



Brought to you by

siniat

Shaping the way people build

FULL. METAL. STUD.

SAY HELLO TO
OUR **VALUE RANGE**
OF METAL FRAMES

Made for building:

- ▶ MF suspended ceilings
- ▶ Stud partitions
- ▶ Wall linings



www.siniatbulldog.co.uk

BETTER THAN TIMBER

LIGHTWEIGHT NOT FLIMSY

On its own, a metal length feels flimsy. But locked together with screws and plasterboard to form a system, a metal frame wall is as solid as a timber frame wall. And it offers the same acoustic performance.

100% CONSISTENT



A metal length is manufactured for precision. It won't bow, warp or differ in performance. And there are no natural knots to work around, either.

PRE-CUT SERVICE HOLES

No additional drilling required.



IT'S **50%** QUICKER

QUICK AND EASY TO INSTALL

A metal length is very simple to install, using tin snips and a cordless drill. Handy if access to mains is a problem. And there are no trailing cables to trip over.



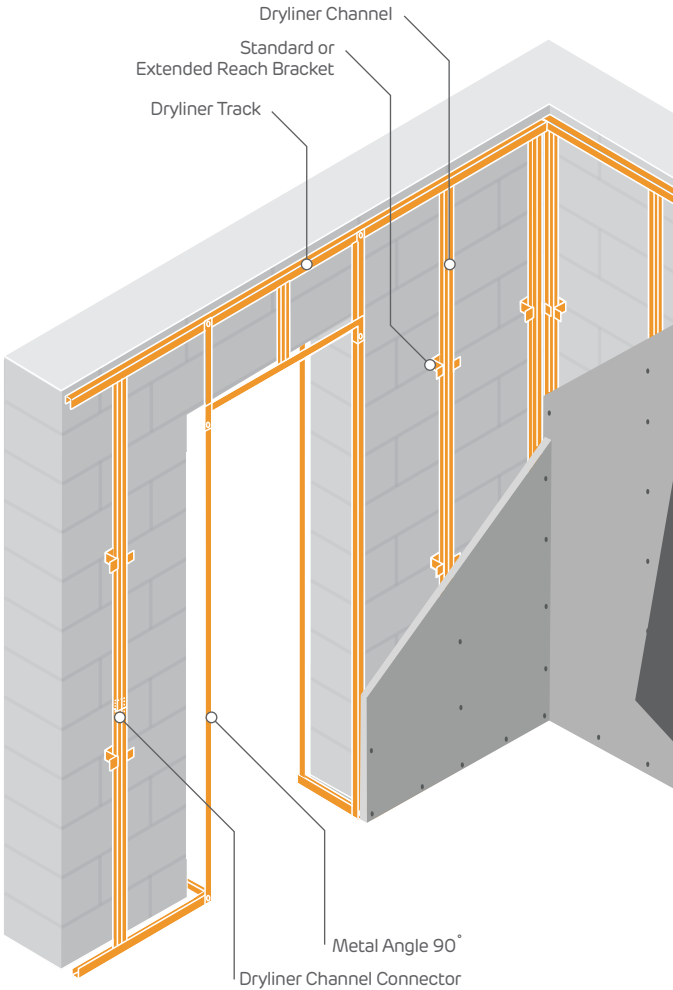
LESS WORK REQUIRED

A metal frame allows you to carry a pack of 10 lengths in one go and requires less physical effort to erect.



TO INSTALL THAN TIMBER

OUR PRODUCT RANGE



METAL STUD WALL LINING



METAL
ANGLE 90°



DRYLINER
TRACK



DRYLINER
CHANNEL



STANDARD
BRACKET



EXTENDED
REACH BRACKET



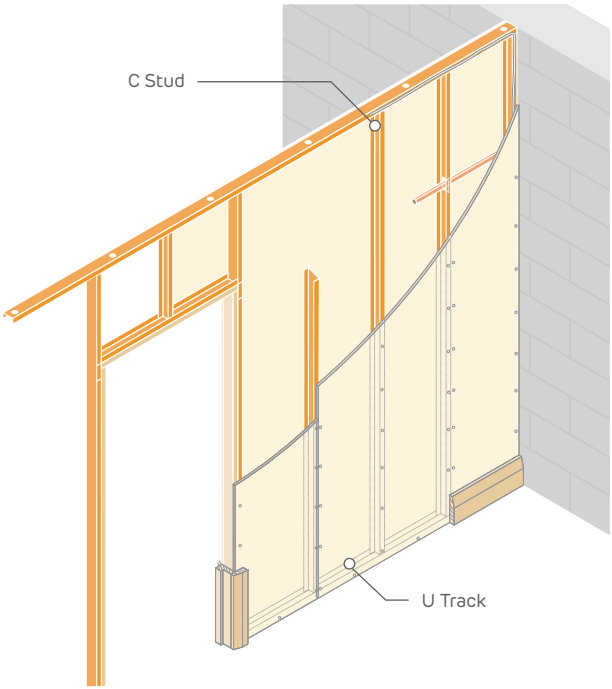
DRYLINER
CHANNEL
CONNECTOR

WALL LINING GUIDE

- 1** Fix Dryliner Track to floor & ceiling
- 2** Fix Standard or Extended Reach Bracket to wall in two places 800mm & 1600mm from the floor for each vertical channel
- 3** Fix Dryliner Channel to Dryliner Track & brackets
- 4** Fix plasterboard to Dryliner Track & Channel at 300mm centres



METAL STUD PARTITIONS



C STUD



U TRACK

PARTITIONS GUIDE

- 1 Fix U Track to floor and ceiling
- 2 Fit C Stud vertically between the U Tracks
- 3 Fix plasterboard to the metal studs at 300mm centres

CEILING GUIDE

MF SUSPENDED CEILINGS

Fix channels back to back if required minimum overlap of 150mm

Metal Angle 90° cut and bent to form appropriate fixing

Ceiling Channel

Edge Channel

Splice Ceiling Channel if required minimum overlap of 150mm

Board to suit required performance

Insulation to suit required performance

Connecting Clip for single layer systems only

Primary Channel



CEILING CHANNEL



CONNECTING CLIP



PRIMARY CHANNEL



METAL ANGLE 90°



RESILIENT BAR

(also suitable for stud partitions and wall lining)



EDGE CHANNEL

1 Fix Edge Channel at the required height around the perimeter of the room

2 Install Metal Angle 90° to joists at centres required for ceiling type (this will differ depending on board weight see siniat.co.uk)

3 Install Primary Channel across the room sitting on top of Edge Channel & screw to Metal Angle 90°

4 Install Ceiling Channel between Edge Channels perpendicular to the Primary Channels, fix to Primary Channels with Connecting Clips

5 Install insulation if required and fix plasterboard to Edge Channels at 150mm centres and Ceiling Channels at 230mm centres

INSTALLATION TIPS

For installation tips on using metal frame systems, check out our step-by-step installation guides on YouTube, which are all on the Siniat UK Channel.

youtube.com/siniatukchannel



Our Training Centre Manager will show you how to:

- ◀ **Build a stud partition wall**
- ◀ **Put up a wall lining**
- ◀ **Install a suspended ceiling**

SINIAT LIMITED

Marsh Lane, Easton-in-Gordano
Bristol BS20 ONE
T +44 (0) 1275 377 773
www.siniat.co.uk



Certificate No. 75024



Certificate No. 13594